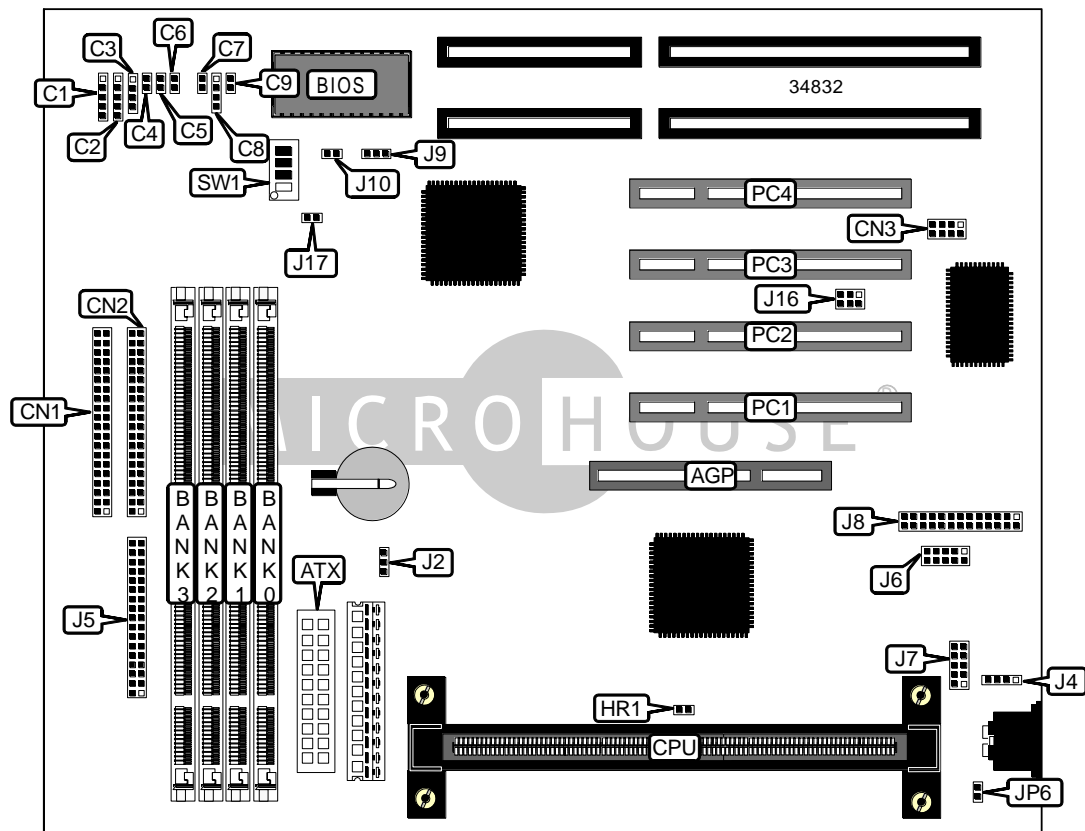


# GIGA-BYTE TECHNOLOGY CO., LTD.

## GA - 6 8 6 B L X

<b>Device Type</b>	Mainboard
Processor	Pentium II
Processor Speed	200/233/266/300/333/366MHz
Chip Set	Intel
Video Chip Set	None
Maximum Onboard Memory	1GB (EDO & SDRAM supported)
Maximum Video Memory	None
Cache	256/512KB (located on Pentium II CPU)
BIOS	Award
Dimensions	305mm x 244mm
I/O Options	32-bit PCI slots (4), floppy drive interface, green PC connector, IDE interfaces (2), parallel port, PS/2 mouse port, serial ports (2), IR connector, USB connector, ATX power connector, AGP slot
<b>NPU Options</b>	None



Continued on next page. . .

GIGA-BYTE TECHNOLOGY CO., LTD.  
GA - 686BLX

... continued from previous page

CONNECTIONS			
Purpose	Location	Purpose	Location
AGP slot	AGP	USB connector	CN3
ATX power connector	ATX	CPU fan power	J2
IR connector	C1	PS/2 mouse interface	J4
Power LED & keylock	C2	Floppy drive interface	J5
Speaker	C3	Serial port 2	J6
Turbo LED	C4	Serial port 1	J7
Turbo switch	C5	Parallel port	J8
Reset switch	C6	Wake on LAN connector	J9
Green PC connector	C7	System after AC back connector	J10
IDE interface LED	C8	PCI audio connector	J16
Soft off power supply	C9	ACPI LED	J17
IDE interface 2	CN1	32-bit PCI slots	PC1 - -PC4
IDE interface 1	CN2		

USER CONFIGURABLE SETTINGS		
Function	Label	Position
í Factory configured - do not alter	HR1	Unidentified
Keyboard power on enabled	JP6	Closed
Keyboard power on disabled	JP6	Open

DIMM CONFIGURATION				
Size	Bank 0	Bank 1	Bank 2	Bank 3
8MB	(1) 1M x 64	None	None	None
16MB	(1) 2M x 64	None	None	None
16MB	(1) 1M x 64	(1) 1M x 64	None	None
24MB	(1) 2M x 64	(1) 1M x 64	None	None
24MB	(1) 1M x 64	(1) 1M x 64	(1) 1M x 64	None
32MB	(1) 4M x 64	None	None	None
32MB	(1) 2M x 64	(1) 2M x 64	None	None
32MB	(1) 1M x 64	(1) 1M x 64	(1) 1M x 64	(1) 1M x 64
40MB	(1) 4M x 64	(1) 1M x 64	None	None
48MB	(1) 4M x 64	(1) 2M x 64	None	None
48MB	(1) 2M x 64	(1) 2M x 64	(1) 2M x 64	None
64MB	(1) 2M x 64	(1) 2M x 64	(1) 2M x 64	(1) 2M x 64
64MB	(1) 8M x 64	None	None	None
64MB	(1) 4M x 64	(1) 4M x 64	None	None

Continued on next page...

GIGA-BYTE TECHNOLOGY CO., LTD.  
GA - 6 8 6 B L X

... continued from previous page

DIMM/SIMM CONFIGURATION (CON'T)				
Size	Bank 0	Bank 1	Bank 2	Bank 3
72MB	(1) 8M x 64	(1) 1M x 64	None	None
80MB	(1) 8M x 64	(1) 2M x 64	None	None
96MB	(1) 8M x 64	(1) 4M x 64	None	None
96MB	(1) 4M x 64	(1) 4M x 64	(1) 4M x 64	None
128MB	(1) 16M x 64	None	None	None
128MB	(1) 8M x 64	(1) 8M x 64	None	None
128MB	(1) 4M x 64	(1) 4M x 64	(1) 4M x 64	(1) 4M x 64
136MB	(1) 16M x 64	(1) 1M x 64	None	None
144MB	(1) 16M x 64	(1) 2M x 64	None	None
152MB	(1) 16M x 64	(1) 1M x 64	(1) 1M x 64	(1) 1M x 64
160MB	(1) 16M x 64	(1) 4M x 64	None	None
176MB	(1) 16M x 64	(1) 2M x 64	(1) 2M x 64	(1) 2M x 64
192MB	(1) 16M x 64	(1) 8M x 64	None	None
192MB	(1) 8M x 64	(1) 8M x 64	(1) 8M x 64	None
224MB	(1) 16M x 64	(1) 4M x 64	(1) 4M x 64	(1) 4M x 64
256MB	(1) 32M x 64	None	None	None
256MB	(1) 16M x 64	(1) 16M x 64	None	None
256MB	(1) 8M x 64	(1) 8M x 64	(1) 8M x 64	(1) 8M x 64
272MB	(1) 16M x 64	(1) 16M x 64	(1) 1M x 64	(1) 1M x 64
280MB	(1) 32M x 64	(1) 1M x 64	(1) 1M x 64	(1) 1M x 64
288MB	(1) 16M x 64	(1) 16M x 64	(1) 2M x 64	(1) 2M x 64
304MB	(1) 32M x 64	(1) 2M x 64	(1) 2M x 64	(1) 2M x 64
320MB	(1) 16M x 64	(1) 16M x 64	(1) 4M x 64	(1) 4M x 64
320MB	(1) 16M x 64	(1) 8M x 64	(1) 8M x 64	(1) 8M x 64
352MB	(1) 32M x 64	(1) 4M x 64	(1) 4M x 64	(1) 4M x 64
384MB	(1) 16M x 64	(1) 16M x 64	(1) 16M x 64	None
448MB	(1) 32M x 64	(1) 8M x 64	(1) 8M x 64	(1) 8M x 64
512MB	(1) 32M x 64	(1) 32M x 64	None	None
512MB	(1) 16M x 64	(1) 16M x 64	(1) 16M x 64	(1) 16M x 64
640MB	(1) 32M x 64	(1) 16M x 64	(1) 16M x 64	(1) 16M x 64
768MB	(1) 32M x 64	(1) 32M x 64	(1) 32M x 64	None
1024MB	(1) 32M x 64	(1) 32M x 64	(1) 32M x 64	(1) 32M x 64
Note: Maximum EDO memory is 1GB. Maximum SDRAM is 512MB.				

CACHE CONFIGURATION
Note: 256KB/512KB cache is located on the Pentium II CPU.

Continued on next page...

GIGA-BYTE TECHNOLOGY CO., LTD.  
GA - 6 8 6 B L X

... continued from previous page

CPU SPEED SELECTION						
CPU speed	Clock speed	Multiplier	SW1/1	SW1/2	SW1/3	SW1/4
200MHz	66MHz	3x	Off	On	Off	Off
233MHz	66MHz	3.5x	On	On	Off	Off
266MHz	66MHz	4x	Off	Off	On	Off
300MHz	66MHz	4.5x	On	Off	On	Off
333MHz	66MHz	5x	Off	On	On	Off
366MHz	66MHz	5.5x	On	On	On	Off